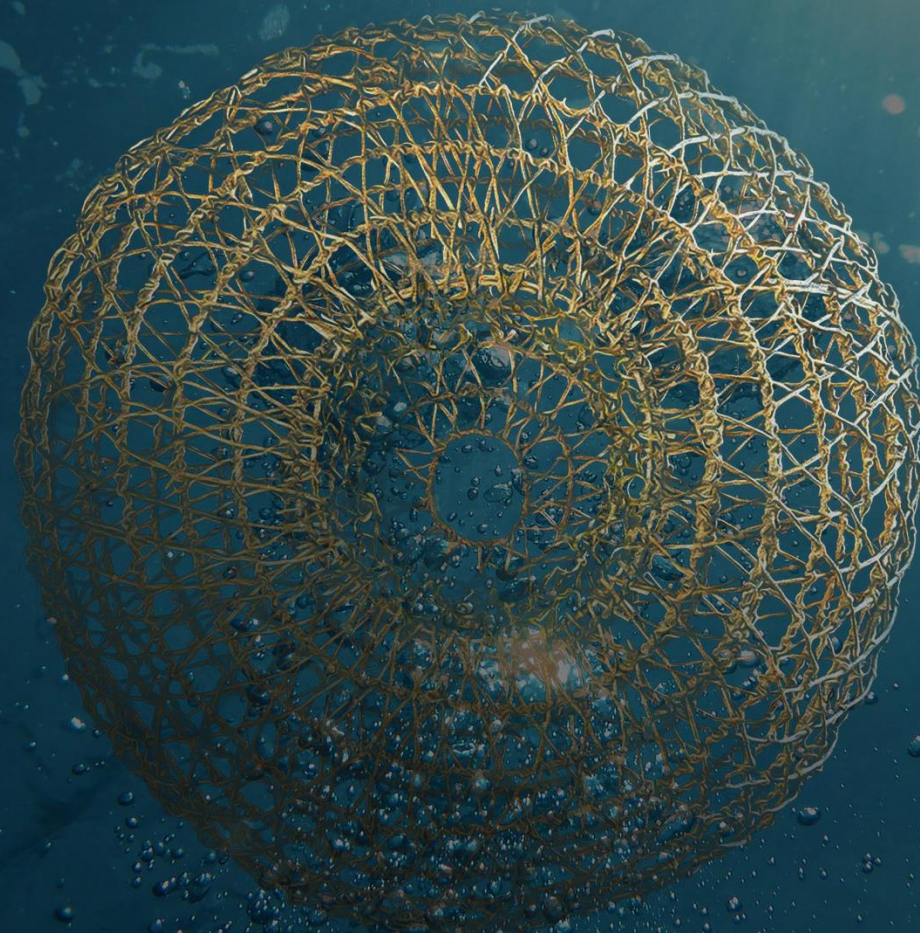


The Mana Kai initiative, Climate Change & Adaptation

Climate Action Tai Tokerau

8th September 2023



Who's in our room today?

Engage in the workshop on [Slido.com](https://www.slido.com)

Enter the code

#

slido



Mana Kai Initiative



Dialogues

30+ Dialogues with food system 'communities'

120+ Organisations represented

250+ People connected via the dialogues and survey

1500+ Quotes captured



Food System Tensions

Food is not affordable

Food is affordable but society is not equitable

Export focus delivers prosperity

Export focus causes problems

An organic, local, traditional system

A technology enabled, internationally connected modern system

Top-down mandates will change the system

Grassroots initiatives will drive change

Our agricultural practices are world leading

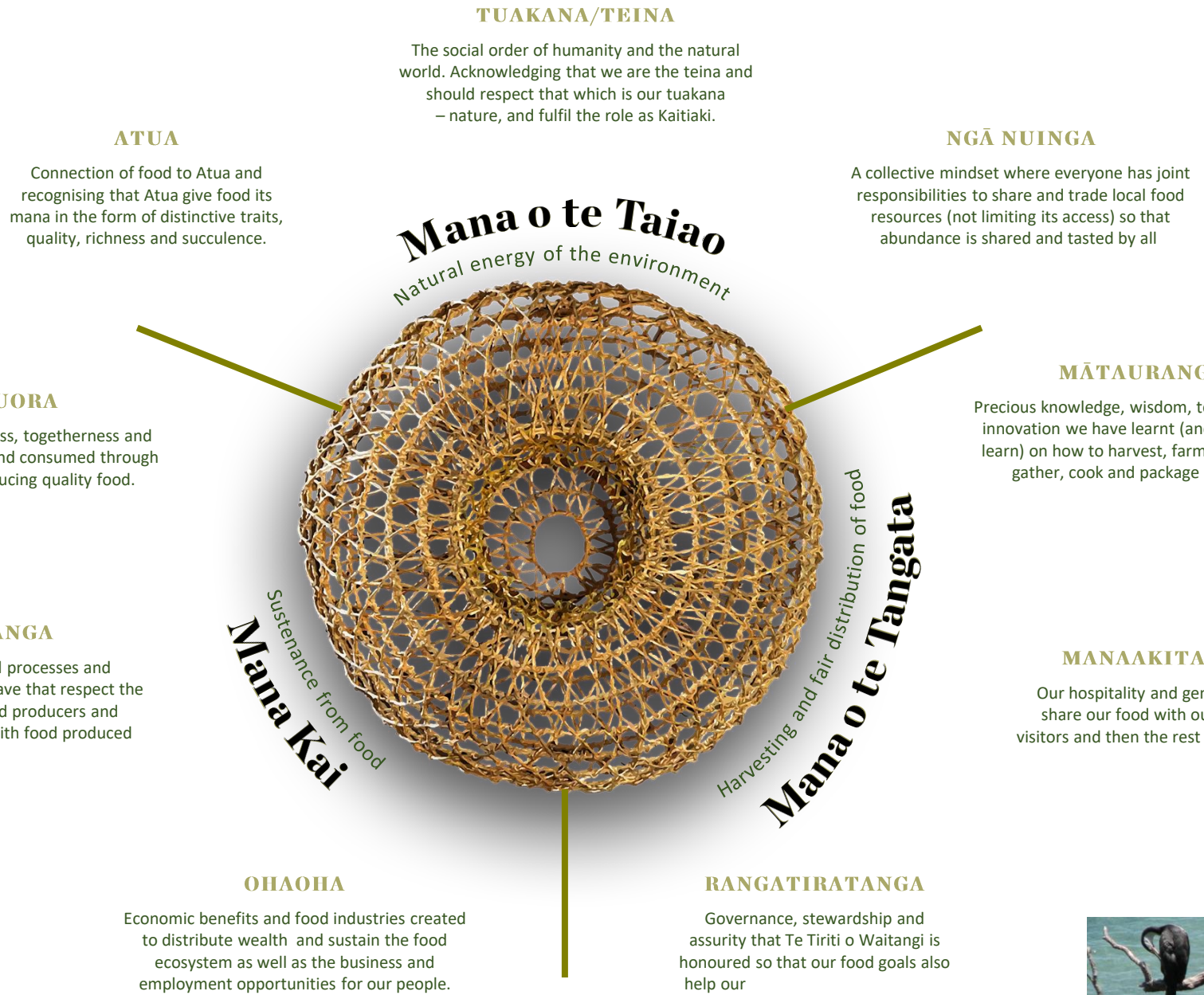
Our agricultural practices are damaging the land and oceans

Responsibility for health outcomes lies with Government, producers and marketers

Responsibility sits with individual choices of consumers and eaters



Food System Alignment



Proposed Initiatives

	Taiao	Tangata	Mana Kai
Immediate	 <p>The Mana Kai Pou</p>	 <p>Community Food Platform</p>	 <p>Mission-led Food Systems Science</p>
Medium	 <p>Ocean Legacies</p>	 <p>Elevate Food in schools</p>	 <p>Biotech conversation</p>
Long term	 <p>Regenerating farming pathways</p>	 <p>Healthy Sustainable Eating Guidelines</p>	



Agriculture Sector Climate Change Adaptation Roadmap

The three climate scenarios

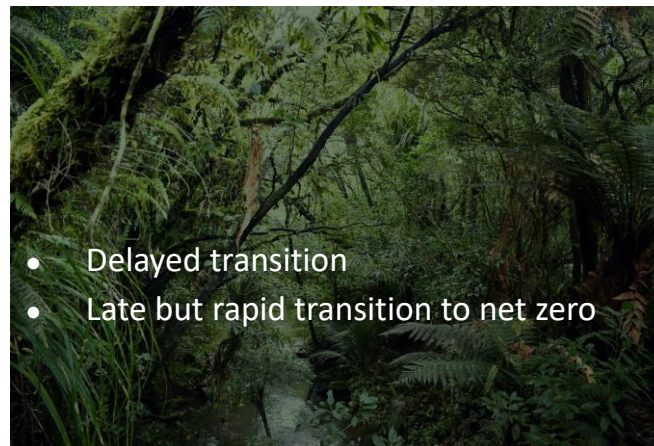
1.5°C

Tū-ā-pae - stance in order, step in succession
(Orderly)



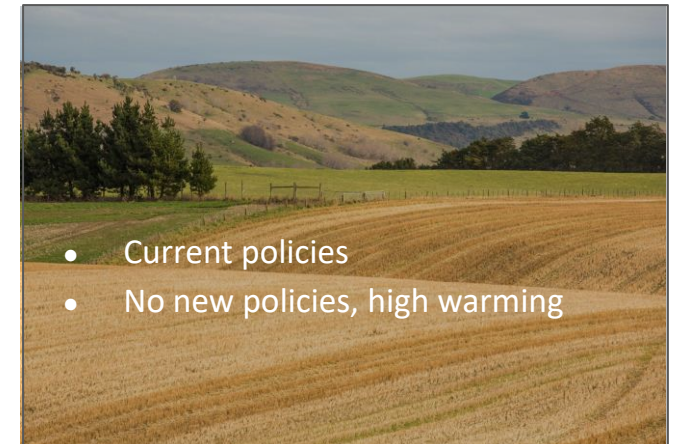
2°C

Tū-ā-hopo - misstep
(Disorderly)



3°C

Tū-ā-tapape - faltered step, to fall
(Hot house)



What are the numbers behind these scenarios?

Tū-ā-pae - Orderly 2050

Increase in global temp

1.6°C

Compared to pre-industrial

NZ population

+16%

Compared to 2020

NZ extreme heat

+15 days

For 2040 relative to 1990

NZ extreme rainfall

+15%

For 2040 relative to 1990

NZ dairy herd

-30%

Compared to 2020

NZ livestock herd

-22%

Compared to 2020

Hort and arable land

+34%

Compared to 2020

Per tonne carbon price (NZD)

\$277 (2050)

Tū-ā-hopo - Disorderly 2050

Increase in global temp

2.0°C

Compared to pre-industrial

NZ population

+22%

Compared to 2020

NZ extreme heat

+20 days

For 2040 relative to 1990

NZ extreme rainfall

+18%

For 2040 relative to 1990

NZ dairy herd

-17%

Compared to 2020

NZ livestock herd

-19%

Compared to 2020

Hort and arable land

+1%

Compared to 2020

Per tonne carbon price (NZD)

\$369 (2050)

Tū-ā-tapape - Hothouse 2050

Increase in global temp

2.5°C

Compared to pre-industrial

NZ population

+26%

Compared to 2020

NZ extreme heat

+30 days

For 2040 relative to 1990

NZ extreme rainfall

+22%

For 2040 relative to 1990

NZ dairy herd

-13%

Compared to 2020

NZ livestock herd

-15%

Compared to 2020

Hort and arable land

+1%

Compared to 2020

Per tonne carbon price (NZD)

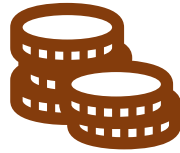
\$35 (2050)



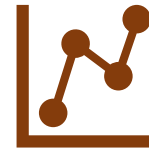
Adaptation Roadmap on a slide



Capability Development



Investment for adaptation



Strategic Data



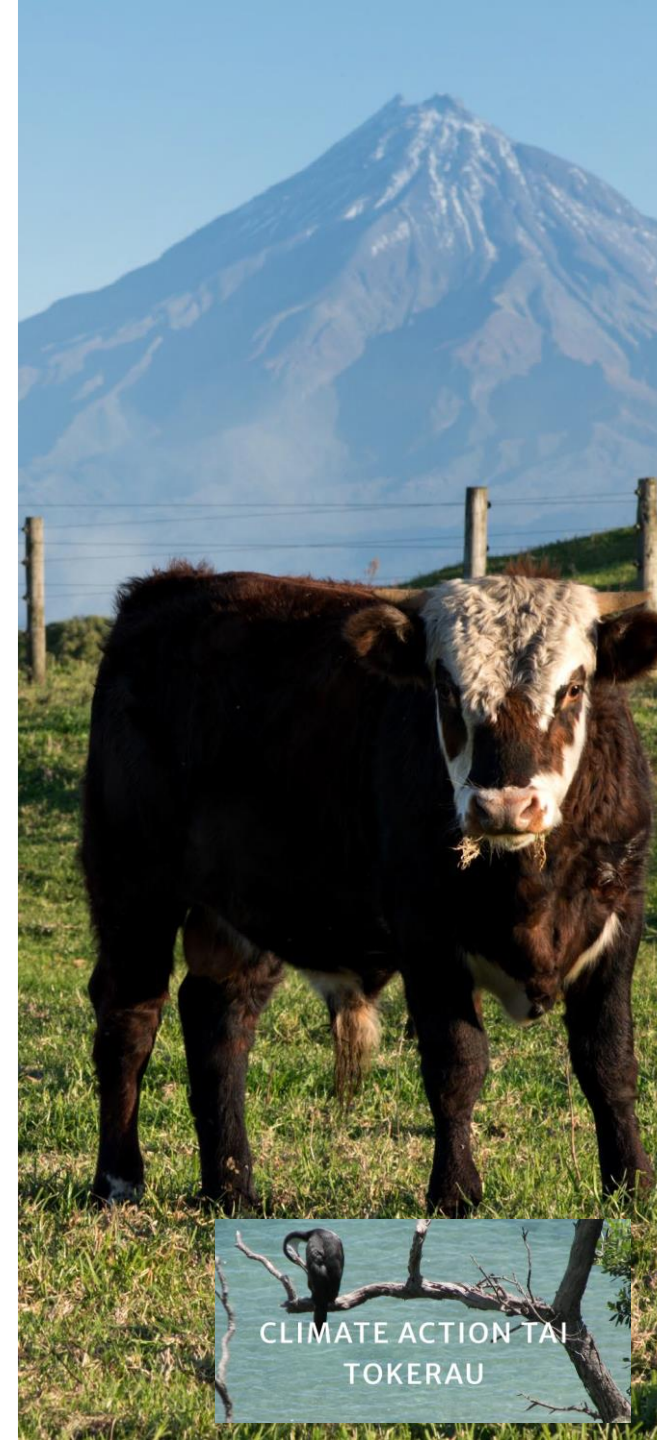
Ecosystem Services



Biotechnology



Collaborative leadership



So, what next ?

Engage on [Slido.com](https://www.slido.com)

Enter the code
#

- What is **resonating or most valuable**?
- What are the **priority gaps, issues, and challenges**?
- What are the **next steps to fix the food system**?

slido



Next steps discussions

In small groups, outline:

- A problem statement
- An opportunity or solution
- What is the next step to create action?



The Mana Kai Pou

A te ao māori code of principles for New Zealand's food sector

Organisations are able to sign-up and make public commitments of positive impact for the food system – as connected to the Mana Kai framework.

Engagement opportunities:

- *Pou development and maintenance*
- *Mana Kai Pou pledging organisations*
- *Promoting the Pou*
- *Governance and financial support*



Thank you



**The
Aotearoa
Circle**

Mā te Kaitiakitanga
ko te Tōnūtanga
Prosperity Through
Guardianship



Jack Keeys

Director, Implementation - Mana Kai &
Agri-Adaptation

Questions or further input?

Jack Keeys

LinkedIn

jack@theaotearoacircle.nz

021 0237 1476

