

# Improving Animal Health and Production: *How it improves the environment*

Nigel Meads

Agriculture has gone from having  
**THE** most important job in the world

to having the **TWO** most important jobs in the world

**Nourish People**  
**Preserve the Planet**



**We're not doomed.**



**Planet of Plenty™**  
PlanetofPlenty.com

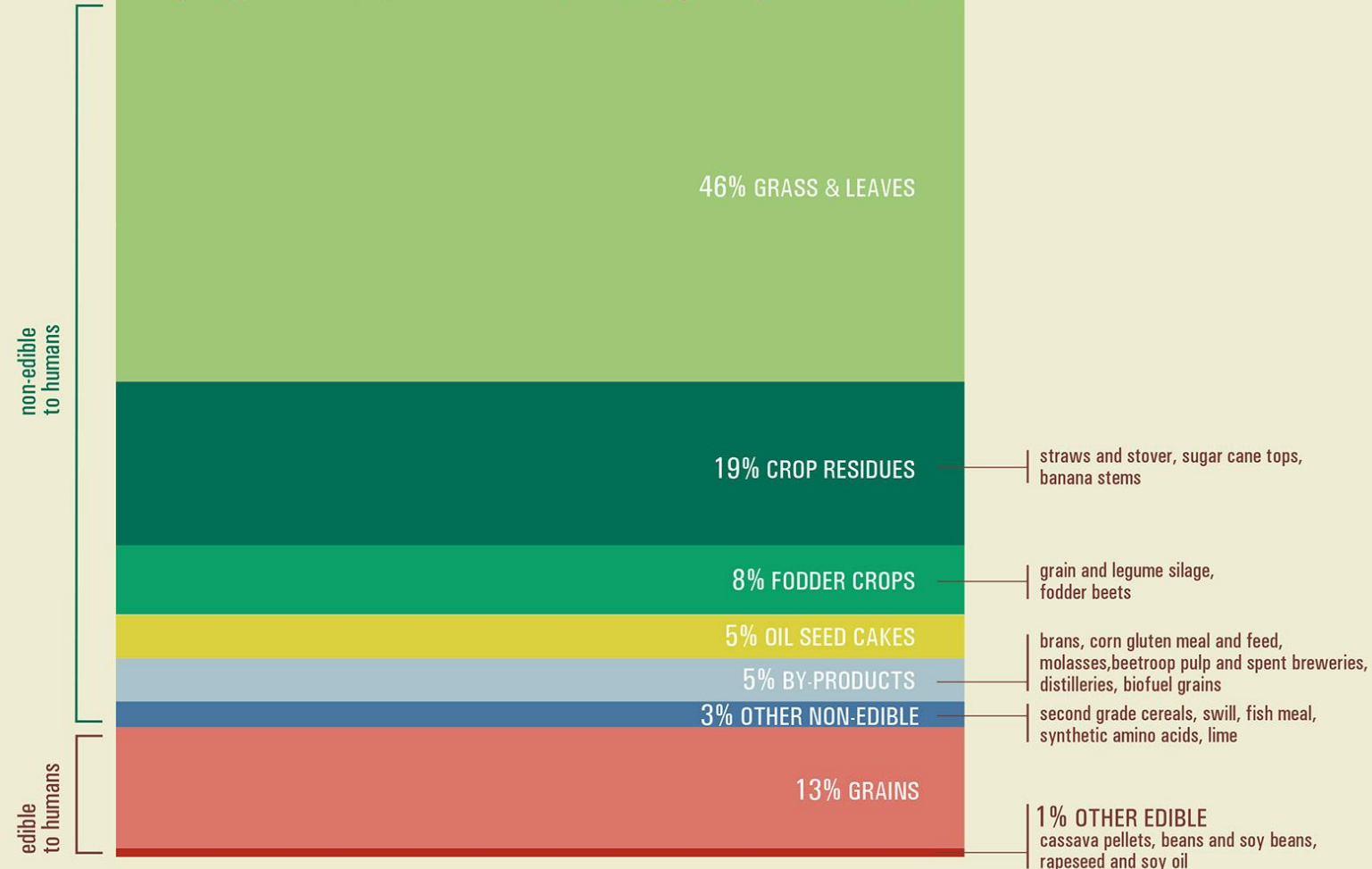
**Alltech®**

A pair of hands is shown holding a small, reflective globe of the Earth. The globe is positioned in the center-left of the frame, with the hands cupping it from below. The background is a lush green field of grass, with bright sunlight filtering through, creating a soft, glowing effect. The overall scene conveys a sense of care and responsibility for the planet.

*Agriculture has the  
greatest potential  
to shape the future  
of our planet*



# 6 BILLION TONNES DRY MATTER



- 86% of global livestock feed is inedible by humans
- Livestock, particularly cattle, upcycle inedible raw materials into high-quality human foods



# What shall we do with byproducts?



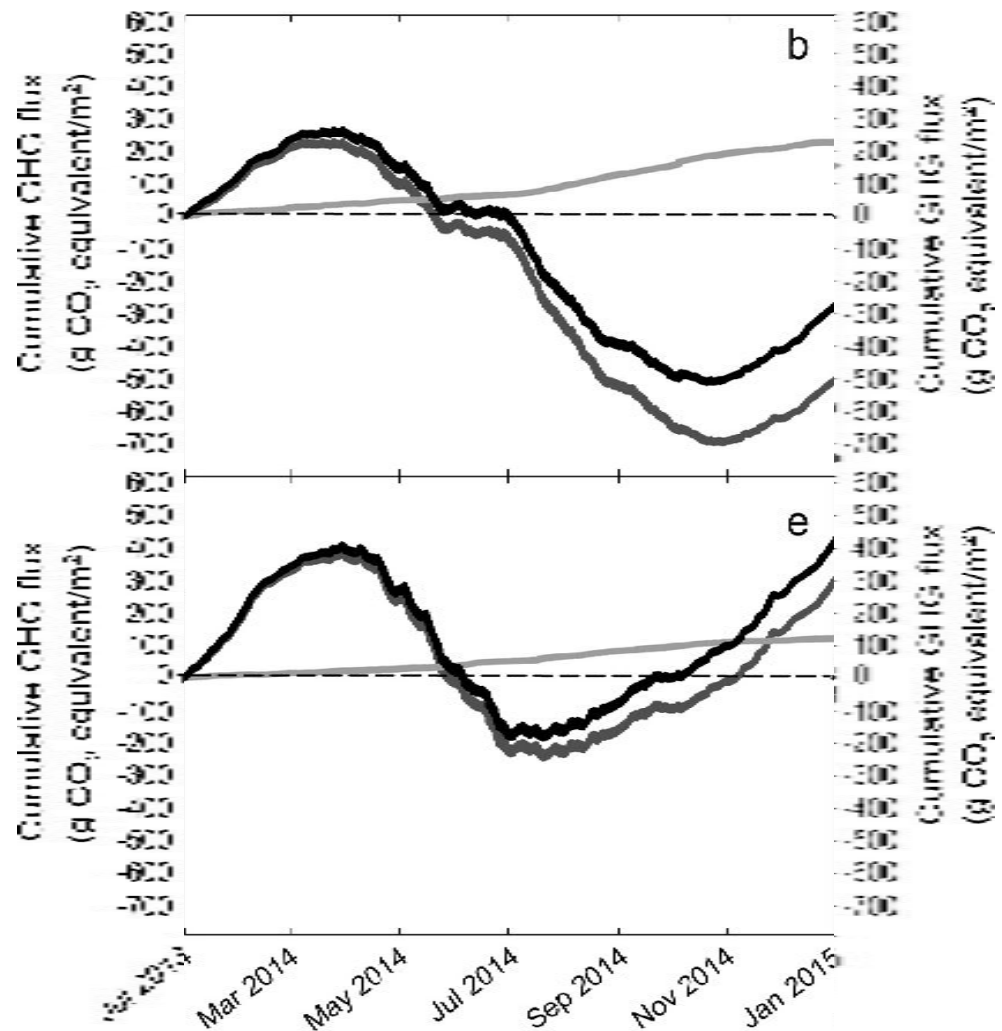
Feed a cow



Compost



Landfill



Grazed

Ungrazed





The cow is the centre





# Lameness

For a 300-cow herd doing 380 kg MS/cow,  
decreasing lameness from 10% to 5%

 carbon footprint 4%

 revenue \$4,800

\*Estimated based on averages, and \$6/kg payout, not based on any specific farm

# Somatic cell count

For a 300-cow herd doing 380 kg MS/cow,

decreasing SCC from 180,000 to 130,000

 carbon footprint 1.5%

 revenue \$30,600

\*Estimated based on averages, and \$6/kg payout, not based on any specific farm



# Empty rate

For a 300-cow herd doing 380 kg MS/cow,  
decreasing empty rate from 15% to 10%

 carbon footprint 2%

 revenue \$34,200

\*Estimated based on averages, and \$6/kg payout, not based on any specific farm

# Genetic gain

For a 300-cow herd doing 380 kg MS/cow,

Increasing to 395 kg MS/cow

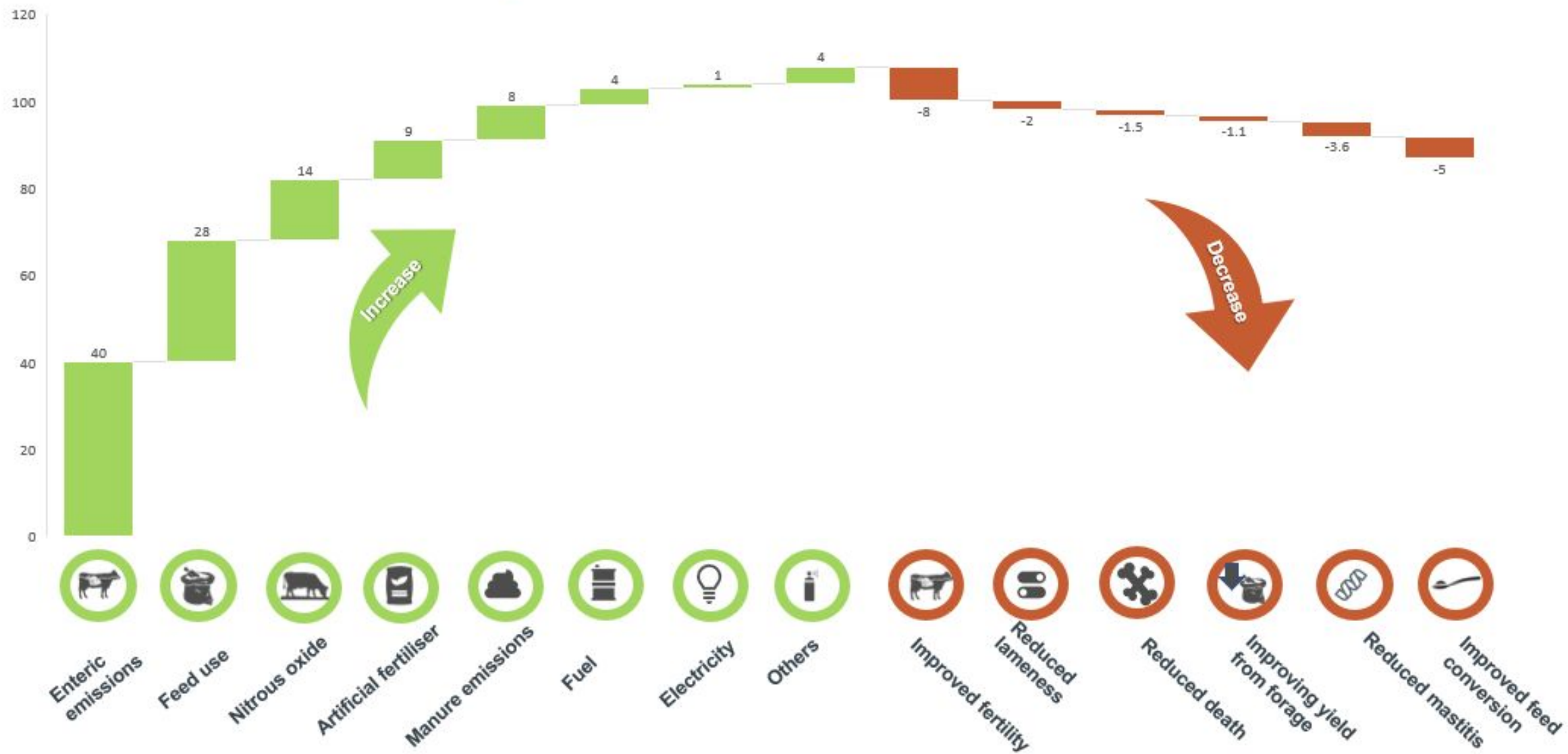
 carbon footprint 1.5%

 revenue – depends on feed cost

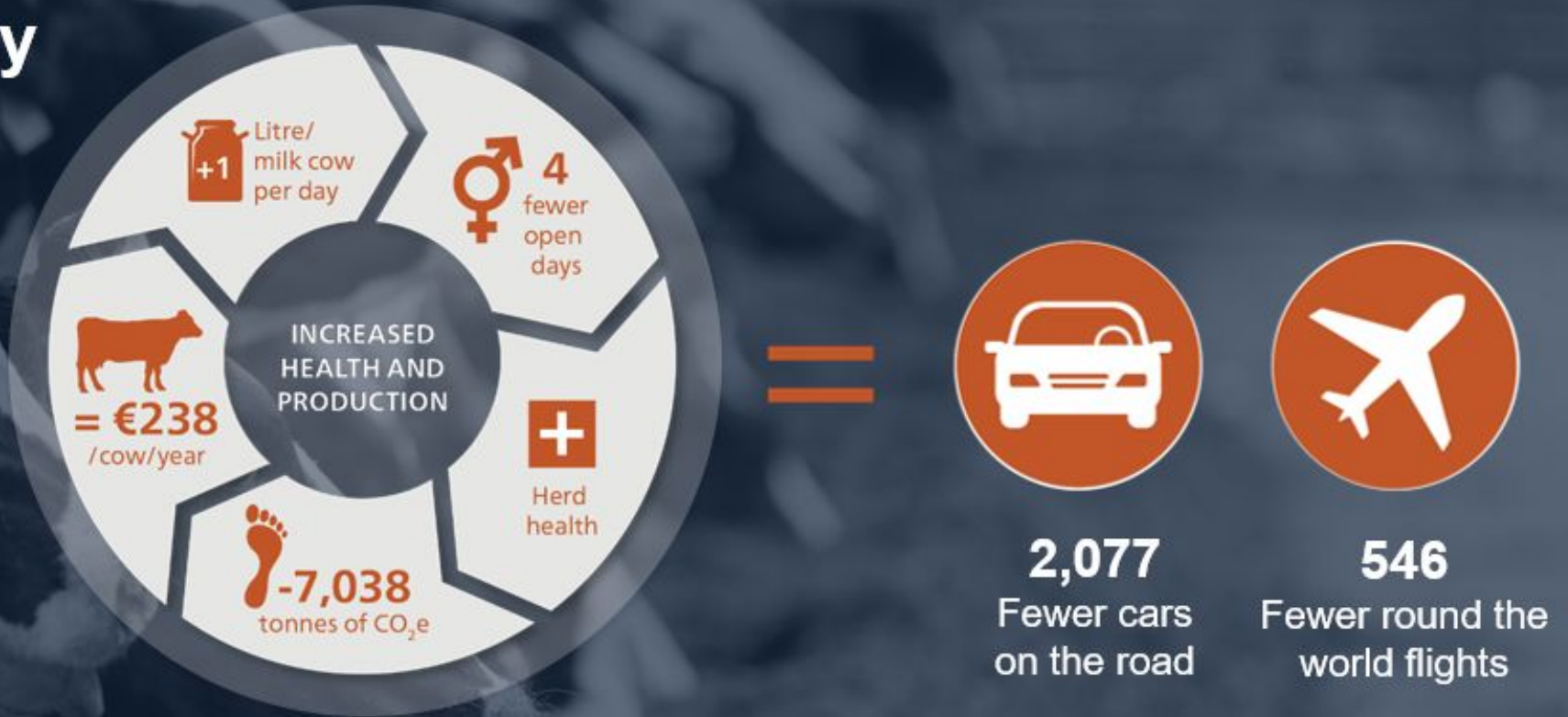
\*Estimated based on averages, and \$6/kg payout, not based on any specific farm



# The sum of all the parts



# Profitability



## THE STUDY: DAIRY



14,257 cows on programme



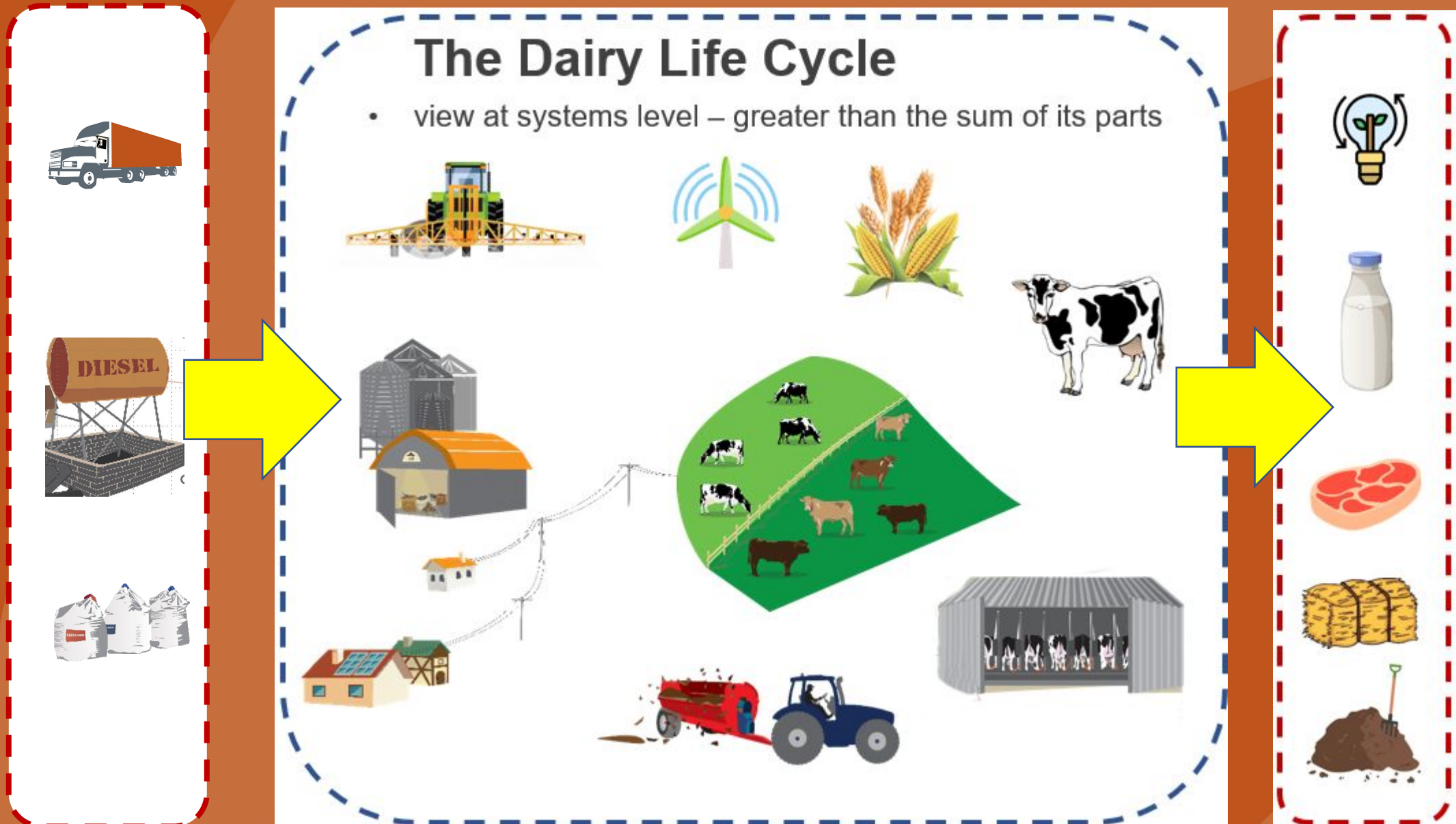
19 countries



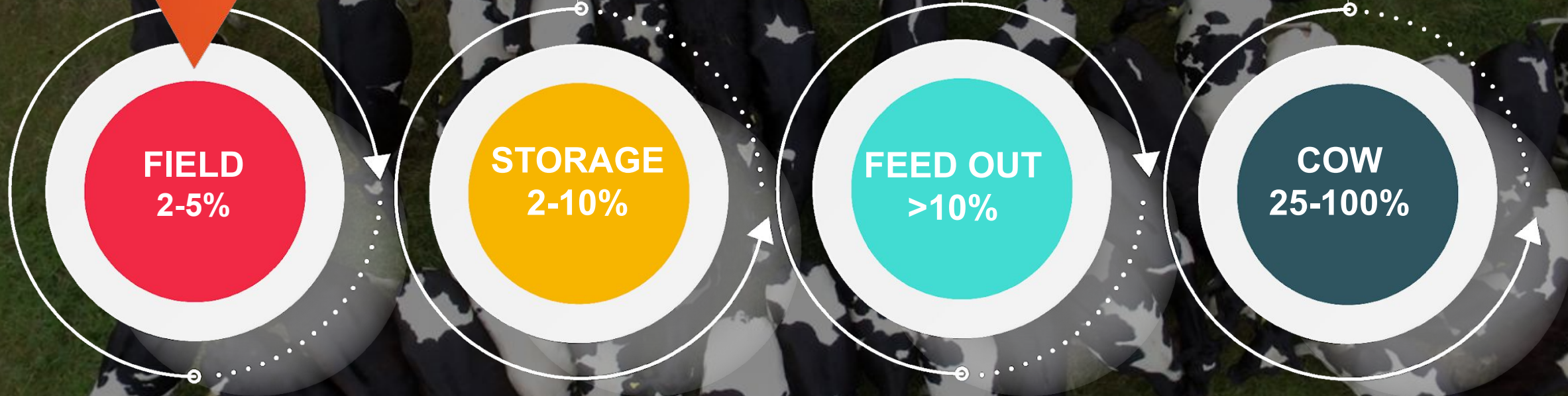
58 farms



# Lifecycle Analysis



# Where else can we look for waste?





*“We have such an extraordinary opportunity living in the time we do.”*

Dr. Mark Lyons,  
President and CEO, Alltech





# Thank you



Nigel Meads

[nmeads@alltech.com](mailto:nmeads@alltech.com)

021 892 561